



IHS Markit™

Regional eXplorer

Regional eXplorer (ReX) Update

2nd Quarter of 2017

Welcome.

We are pleased to announce another **successful product update** of the IHS Markit Regional eXplorer.

This update incorporates:

- 2016 data for **all** modules
- a number of **major data source** publications (see page 6 for details)
- quality checks to further improve the **accuracy** of the model

As always, we welcome your comments and feedback.
We hope you enjoy this update.

Best,
The IHS Markit ReX team



REGIONAL PERSPECTIVES



MAJOR DATA RELEASES



REX PUBLISHER

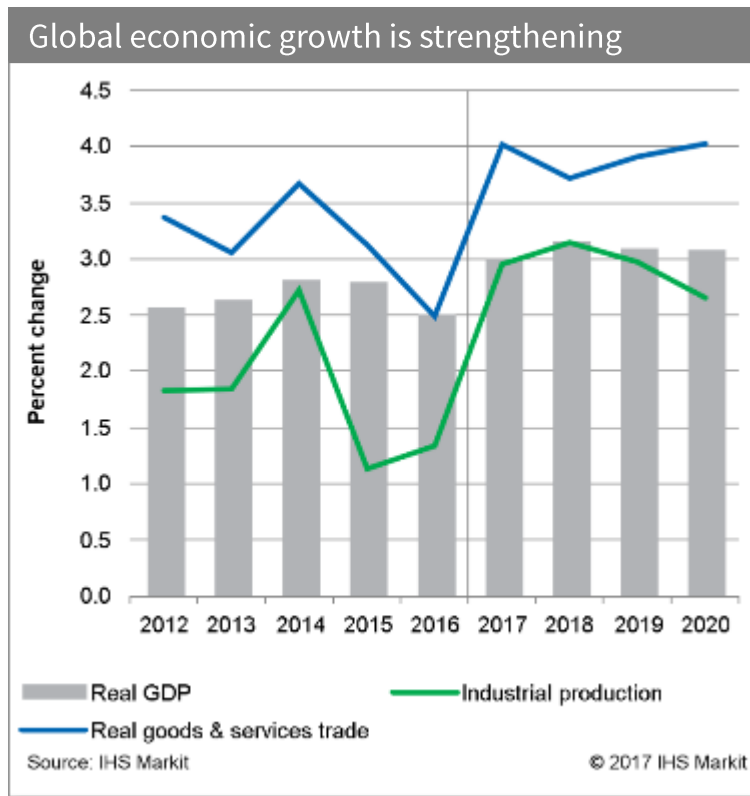
Regional Perspectives: Global Economy

Global economic growth in 2017 looks to be the strongest since 2011.

A combination of factors account for this: *the bounce-back in US growth, strengthening growth in the Eurozone, and better performance in emerging markets* (with recoveries in Russia and Argentina and stabilization in Brazil).

The further pickup in *global real GDP growth from 3.0% this year to 3.2% in 2018* is predicated on the assumption the United States will enact fiscal stimulus. The good news is even if there is no boost from US fiscal policy, the underlying dynamics of the global economy will support a rate of expansion of around 3.0% next year.

Throughout the emerging world, *growth in 2017 is set to be the best since 2013*. Nevertheless, many of the large emerging markets still face challenges. India's and South Africa's economy lost momentum in the January–March quarter.



BOTTOM LINE: The global economy seems poised—finally—to break out of the doldrums and experience a fairly *broad-based acceleration in growth*. Political and policy uncertainties aside, this happy state of affairs will probably continue into 2018.

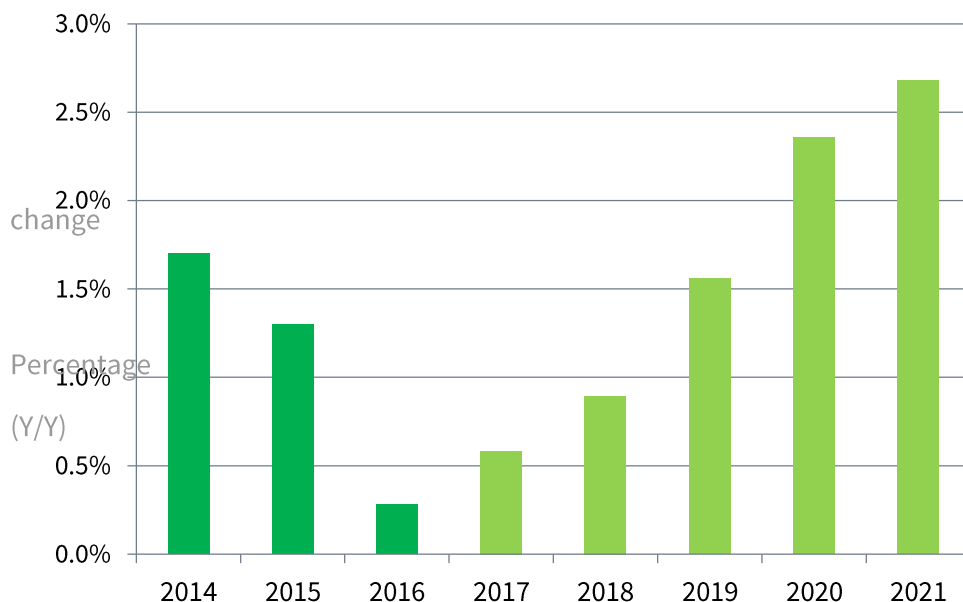
Regional Perspectives: South African Forecast Highlights

IHS Markit expects South Africa's GDP growth rate to average **0.6%** in **2017** and **0.9%** in **2018**. The growth outlook hinges mostly on the *export sector's performance*, since domestic demand conditions are expected to remain dismal during 2017–18.

Policy space is limited to support the economy and IHS Markit assumes an *unchanged monetary policy* stance during 2017, whereas *fiscal consolidation is envisioned* in the near term.

The economic challenges facing South Africa include its ability to *sustain economic growth* in volatile global markets, *broaden participation*, strengthen *industrial development* and *trade performance*, and accelerate the pace of *job creation*.

South African economic growth (historic & forecast)



Source: IHS Markit

© 2017 IHS Markit

Major data releases incorporated in this update

Community Survey 2016

The Community Survey data was further incorporated into the ReX model by integrating the regional distributions of the various household-infrastructure variables (housing, sanitation, etc.) on a local municipal level. The same applies to the regional distribution of the language portions within the demographic model. IHS Markit is still waiting on feedback from StatsSA with regards to Labour and Income data that has still not been made available.

General Household Survey (GHS) 2016

The GHS is an annual release from StatsSA, specifically designed to measure various aspects of the living circumstance of South Africa households. Data from the GHS provides input for the majority of the Development Model as well as a number of indicators within the Demographic Model. The data was particularly used to update and model topics such as: Education, Literacy, Household Infrastructure, Urban Population and the headship rates.

Living Conditions Survey (LCS) 2014/15

The LCS is another household-based survey that collects detailed income and expenditure data, as well as information on education, housing and living circumstances from households across South Africa. The LCS data is used to monitor and profile the poverty levels in the country and also provides the necessary data to inform the development and maintenance of household and monitor inequality. StatsSA has however not released the detailed expenditure data which will hopefully be published later this year.

ReX Publisher: taking our ReX data a step further

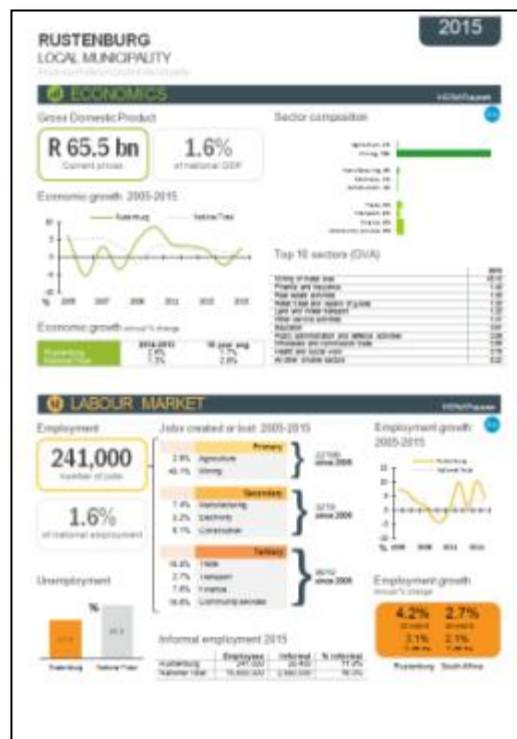
ReX Publisher generates **automated research documents** based on the latest ReX data available. You can choose between a 3-page quick overview, or full content report complete with descriptive charts, data summaries and interpretations.

For our current users:

Since this ReX update included 2016 data for all modules, both ReX Publisher reports now reflect **2016 data**.

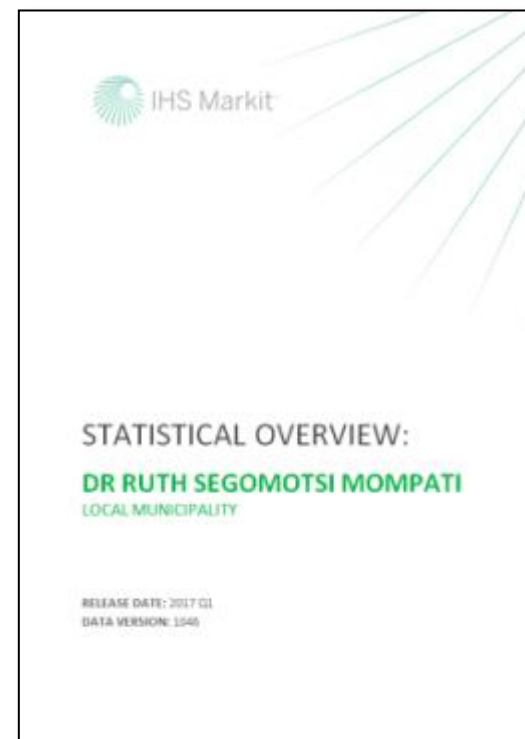
For more information, go to
<http://www.rexpublisher.co.za>
 or contact
Johan.Boshoff@ihsmarkit.com

AT A GLANCE



3 page infographics

STATISTICAL OVERVIEW



90 page document

See clearer.
See further.

with IHS Markit

COPYRIGHT NOTICE AND DISCLAIMER No portion of this presentation may be reproduced, reused, or otherwise distributed in any form without prior written consent of IHS. Content reproduced or redistributed with IHS permission must display IHS legal notices and attributions of authorship. The information contained herein is from sources considered reliable, but its accuracy and completeness are not warranted, nor are the opinions and analyses which that are based upon it, and to the extent permitted by law, IHS shall not be liable for any errors or omissions or any loss, damage, or expense incurred by reliance on information or any statement contained herein. In particular, please note that no representation or warranty is given as to the achievement or reasonableness of, and no reliance should be placed on, any projections, forecasts, estimates, or assumptions, and, due to various risks and uncertainties, actual events and results may differ materially from forecasts and statements of belief noted herein. This presentation is not to be construed as legal or financial advice, and use of or reliance on any information in this publication is entirely at your own risk. IHS and the IHS logo are trademarks of IHS.